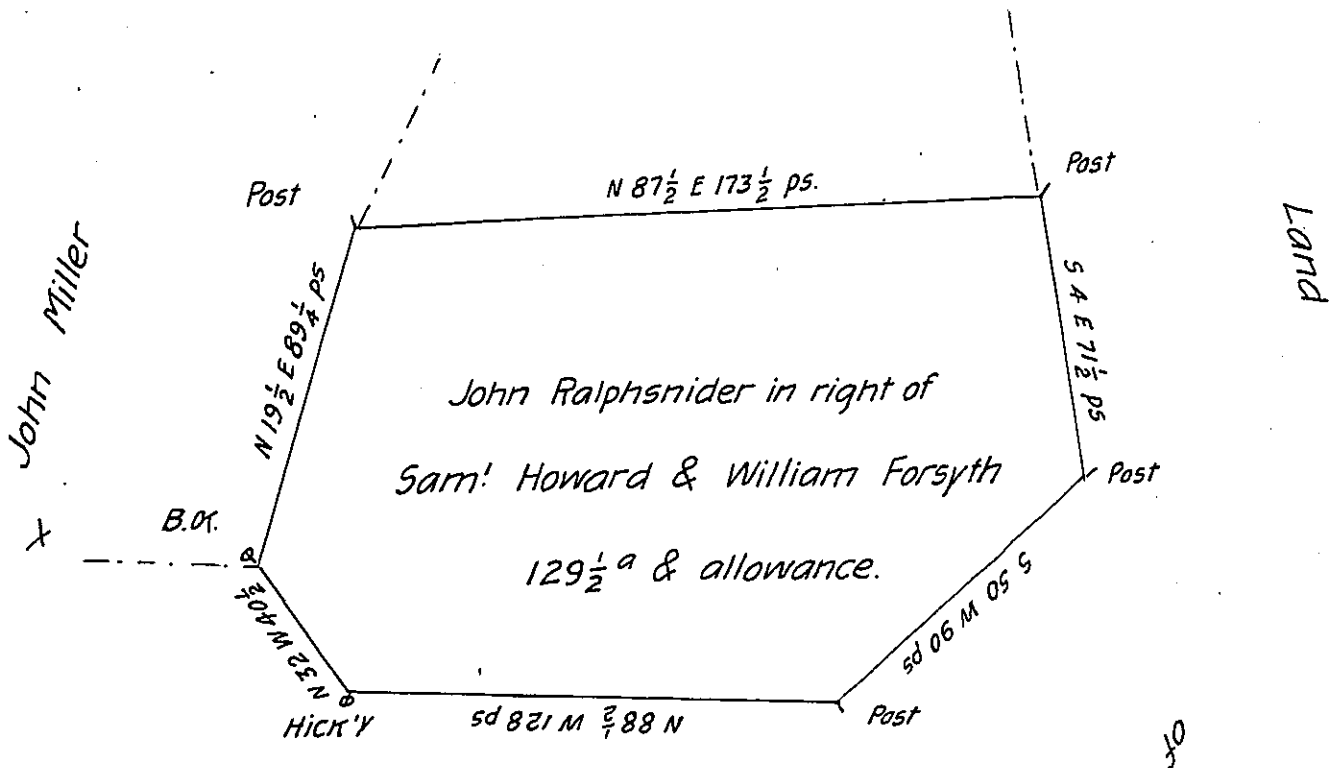


Albright Hickman formerly
part of same tract



John Wingert

The above described tract of one hundred and twenty nine acres, and an half acre of Land & allowance, is part of a larger tract of two hundred and fifty four acres, & allowance, situate in Guilford Township Franklin County; which was surveyed the 20th day of Jan'y 1750, for Samuel Howard & William Forsyth in pursuance of their Warrant dated 21st Oct^r 1749, Resurveyed and divided off by Daniel Henderson Esq^r (late Deputy Surveyor) the 10th day of November 1800, as appears by an Official Draft thereof remaining in my office which I have examined and find correct.

Certified this 5th day of Jan'y 1809. by

Tho. Kirby D.S.

To Samuel Cochran, Esq^r

Surveyor Gen^l of Penn^a

IN TESTIMONY that the above is a copy of the original remaining on file in the Department of Internal Affairs of Pennsylvania, made conformably to an Act of Assembly approved the 16th day of February, 1833, I have hereunto set my Hand and caused the Seal of said Department to be affixed at Harrisburg, this twenty-fourth day of February 1905.

Joseph P. ...
Secretary of Internal Affairs.